

SureBuilt

Concrete Forms & Accessories

DISTRIBUTED BY:

ADVANCE
SHORING COMPANY

1400 Jackson Street
St. Paul, MN 55117
(651) 489-8881 / (800) 328-9573
www.advancedcos.com



SureCurve™ RC Forming System



The SureCurve panels can be assembled into a gang, including all the connecting hardware and accessories, while safely on the ground.



Connecting clamps and stacking plate span the joint between two SureCurve panels.

Concrete tanks and curved walls quickly take shape with the SureCurve™ RC forming system

Each SureCurve panel has a series of turnbuckles that flex the form to a desired radius. Panels can then be joined and stacked to create large gangs.

The large SureCurve gangs are assembled with a lever-actuated connecting clamp. This reduces assembly time and simplifies any reconfiguration.

The connecting clamp, in combination with three different SureCurve panel sizes, can be used to form a radius dimension as small as 10'.

When stacking SureCurve panels in a gang, a stacking plate is used to span the panel joint and bolted to the exterior vertical ribs.

Properly spaced taper ties are typically used to maximize the 1,250 psf allowable pressure rating of the SureCurve forming system.

A waler assembly is pinned to the horizontal tube struts. This assembly distributes the taper tie load to the panel components.

The same waler assembly has holes along the channel. These holes provide tie-off points for fall protection and a place to store taper ties.

Safe working access for concrete placement is provided when walkway brackets are properly spaced, bolted and decked with each gang.

Small dimensions between SureCurve panels or gangs are completed with a lumber filler and adjustable connecting clamp.

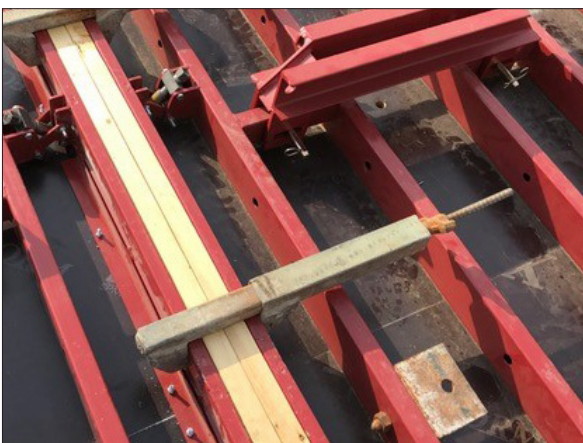
Assembled SureCurve gangs are moved by crane, then braced in position. A brace shoe attachment plate provides for connection.



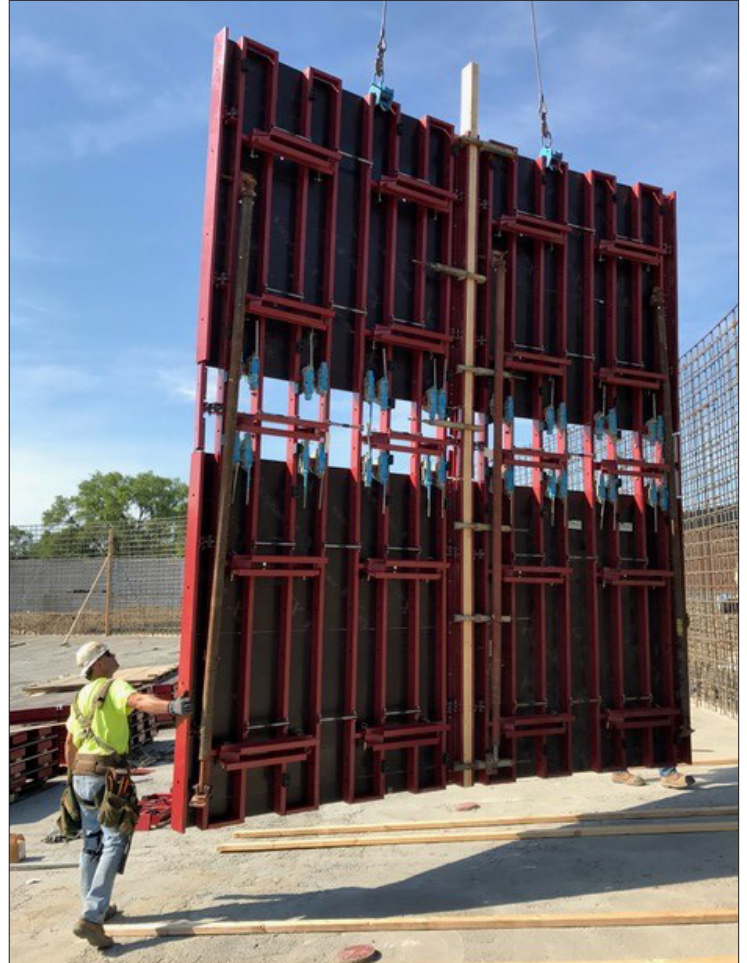
Bracing can travel with each SureCurve gang using the shoe attachment plate.



Walkway brackets bolt to panels to provide support for work platforms.



Adjoining gangs and lumber fillers can be captured with adjustable clamps.



A site-assembled SureCurve gang, including "open" panels for sacrificial plywood with rebar penetrations, is moved into position.

Part No	Description
SBSCRCE88	SureCurve Exterior Panel 8'x8'w
SBSCRCE48	SureCurve Exterior Panel 4'x8'w
SBSCRCE28	SureCurve Exterior Panel 2'x8'w
SBSCRCI88	SureCurve Interior Panel 8'x 7'-8" w
SBSCRCI48	SureCurve Interior Panel 4'x7'-8" w
SBSCRCI28	SureCurve Interior Panel 2'x7'-8" w
SBSCRCW	SureCurve Waler Assembly
SBSCRC25	SureCurve Waler Pin and Clip
SBSCRC23	SureCurve Stacking Plate



SUPPLIERS OF

CONCRETE WALL FORMING

- GANGFORM SYSTEMS
- RADIUS FORMWORK
- HANDSET FORMWORK ACCESSORIES
- JOB-BUILT FORMWORK & ACCESSORIES

CONCRETE SHORING MATERIALS

- HANDSET FRAME SHORING
- TABLE SHORING
- POST SHORES

SCAFFOLDING

- FRAME SCAFFOLD
- SYSTEMS SCAFFOLD
- PLANKING & SCAFFOLD ACCESSORIES

ADVANCE SHORING COMPANY - 1400 JACKSON STREET - ST. PAUL, MN 55117
(651) 489-8881 - advancecos.com

SureBuilt
Concrete Forms & Accessories

ADVANCE
SHORING COMPANY

