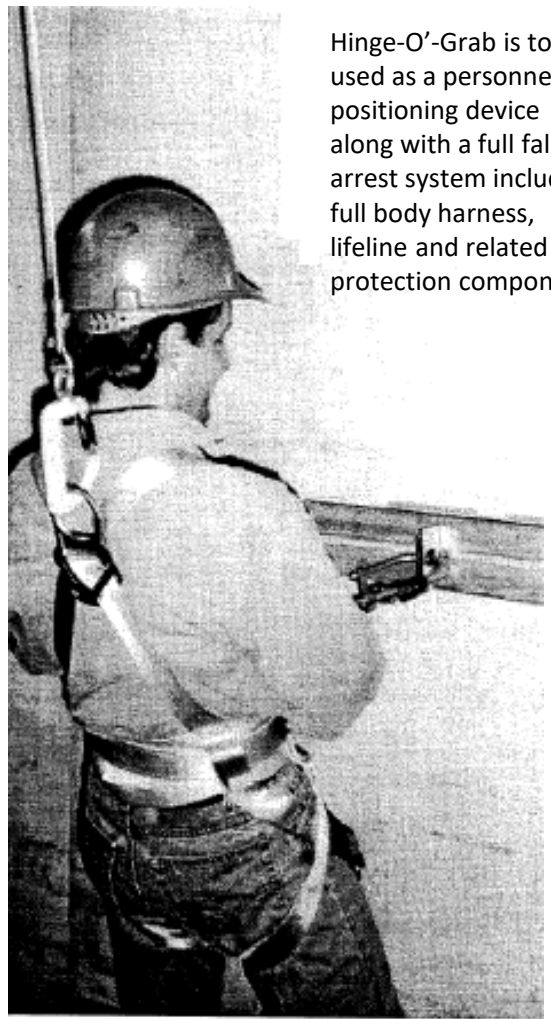
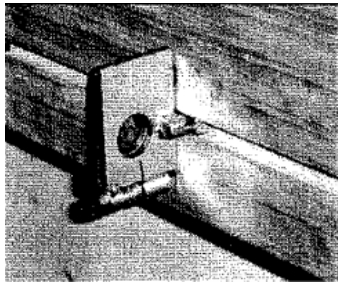


# Hinge-O'-Grab®

**A SIMPLE, AFFORDABLE PERSONNEL POSITIONING DEVICE THAT HOLDS A WORKER SECURELY IN POSITION**

Hinge-O'-Grab is designed for use with concrete wall forming systems that utilize aluminum beams. It provides a stable attachment point to allow the worker the freedom to use both hands while securely positioned on the form. You can easily insert and remove a Hinge-O'-Grab with one hand. Since they only weigh 1-1/2 lbs, it's easy to carry a second in your back pocket and work off two hooks for extra mobility.



Hinge-O'-Grab is to be used as a personnel positioning device along with a full fall arrest system including full body harness, lifeline and related fall protection components

## Key features include:

- Spring-loaded so unit stays in "locked" position
- Easy-to-use and affordable!
- Lightweight – only 1-1/2 lbs

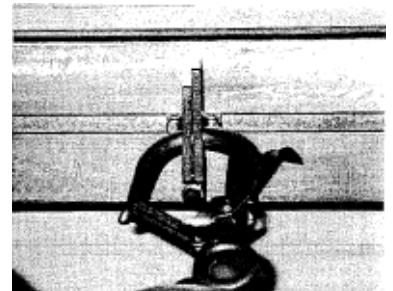
It's as easy as 1, 2, 3 . . .



Open Hinge-O'-Grab to 180°, Insert posts into slot in beam



Close Hinge-O'-Grab by sliding posts along beam slot until plates are touching



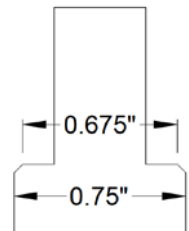
Insert double-locking safety hook through both plates and make sure both safety latches on hook are engaged

**ADVANCE**  
**SHORING COMPANY**

1400 Jackson Street  
Saint Paul, MN 55117  
(651) 489-8881  
(800) 328-9573  
[www.AdvanceCos.com](http://www.AdvanceCos.com)

# CAUTION

1. Hinge-O'-Grab is to be used as a personnel positioning device only and is not a component of the fall arrest system. The worker must be secured with a full fall arrest system, including full body harness, self-retracting lifeline and related fall protection components.
2. Do not use on any aluminum beam other than "aluma" style beams with a 1/2" bolt slot opening, and "T" interior measuring 3/4" in height and 1/2" in width, and **thickness of the metal surrounding the slot of .236 inches**, all measured as the beam is in a horizontal position.
3. Use Hinge-O'-Grab only when the beam as described above is in the horizontal position. Do not use Hinge-O'-Grab on overhead beams, vertical beams, corner beams, or open end beams.
4. Be sure that the aluma beam and form are firmly affixed and capable of supporting personnel.
5. Be certain that both plates of Hinge-O'-Grab are closed before attaching hook. Do not hook to only one plate of Hinge-O'-Grab.
6. The maximum weight for personnel using Hinge-O'-Grab is 280 lbs.
7. Do not use Hinge-O'-Grab with any other attachment than a double locking safety hook. Foreign objects attached to Hinge-O'-Grab may prevent proper engagement of the hook.
8. Do not rely on the feel or sound of snap hook engaging. Always visually check to see if the snap hook has been properly engaged.
9. Check for wear and deterioration before each use.
10. Do not modify Hinge-O'-Grab in any way.
11. Do not use as a lifting or towing hook.
12. Keep Hinge-O'-Grab clean at all times.
13. If Hinge-O'-Grab becomes subject to impact forces, remove from further service.
14. Replace Hinge-O'-Grab if top corner is worn more than 10%. See figure



**ADVANCE**  
**SHORING COMPANY**

**THERE ARE NO IMPLIED WARRANTIES OF MERCHANTABILITY OR FITNESS.** In no event shall Advance Shoring Company be liable for incidental or consequential damages. The limits of liability contained herein are in lieu of all other warranties expressed or implied. The purchaser is responsible for complying with local, municipal, or state codes including OSHA. The seller reserves the right to make design changes without notifying each purchaser.