

Imperial

Heavy-Duty Formwork



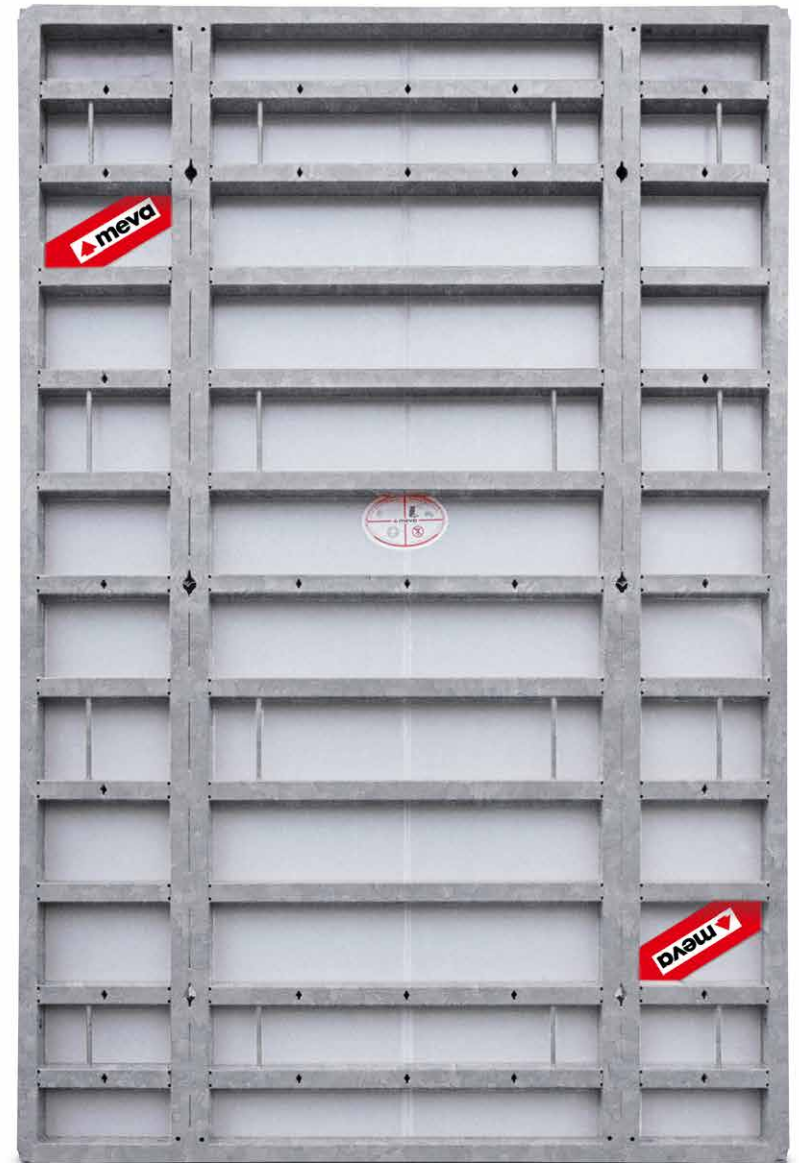
Imperial

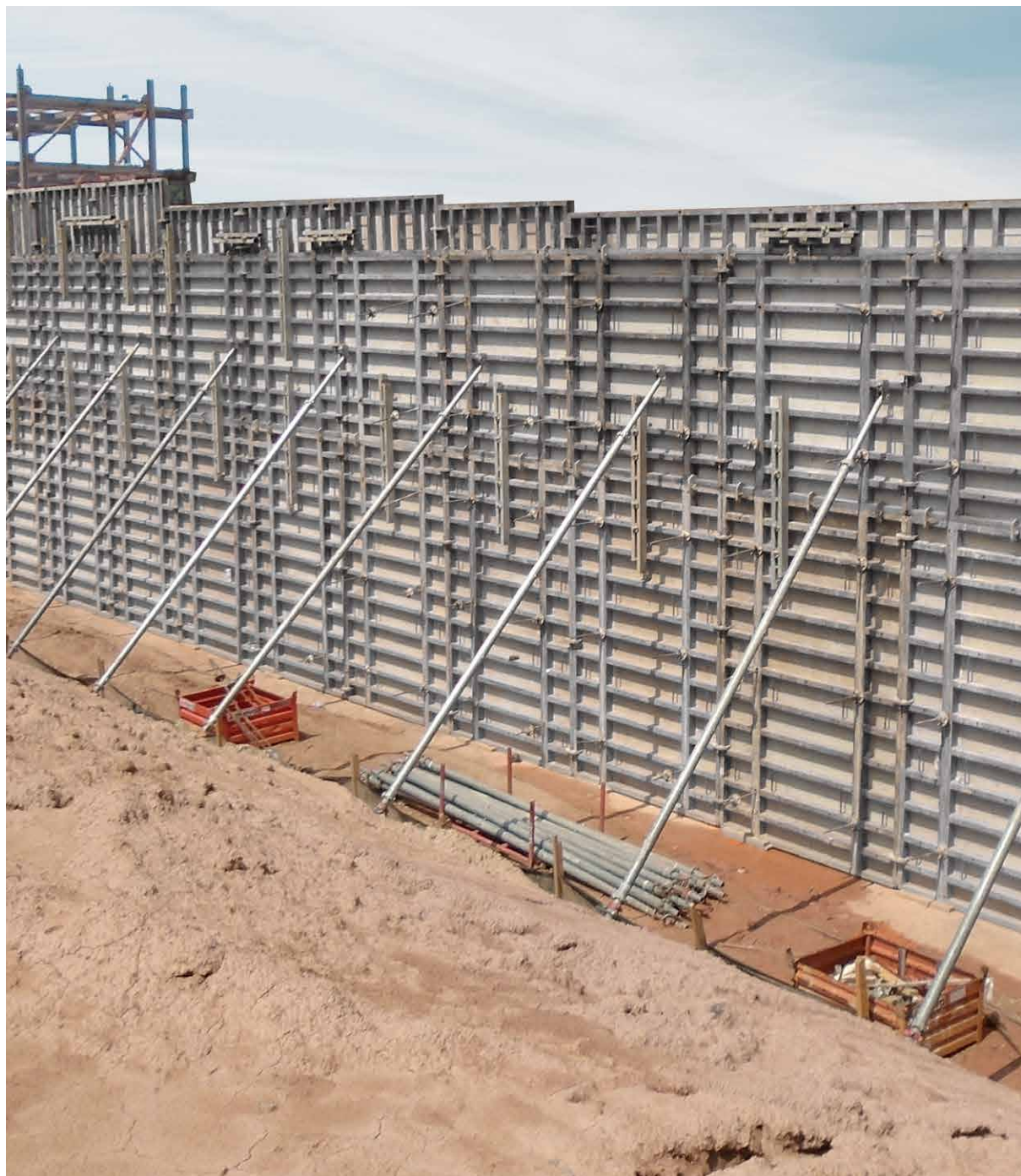
The best solution for your largest jobs

Concrete pour capacity of up to 2,025 psf

Designed for lateral concrete pressure of up to 2,025 psf and offering panel sizes up to 12' high and 8' wide, Imperial wall formwork is ideal for tall and thick walls.

Imperial formwork was designed specifically for the North American market for use in large industrial and civil engineering projects, as well as for commercial and residential building construction such as manufacturing plants, hospitals, retaining walls, and wastewater treatment facilities. Imperial is also ideal anytime large pours are required.





i

Simple. Smart.

Imperial heavy-duty formwork

- **Panel size**
 - Up to 96 square feet contact area per panel (12' x 8')
 - With only one panel high, walls can be formed up to 12' tall
- **Capacity**
 - Admissible concrete pressure of 2,025 psf
- **Ideal for industrial, civil, commercial, and large mixed use and multi-family projects**
- **Closed hollow steel frame profile construction**
 - High strength, structural integrity
 - Torsion-proof
 - Galvanized to reduce concrete adhesion; making stripping and cleaning easier
- **Smart multi-function profile**
 - Welded-in Dywidag threaded nuts for accessory attachment
 - All accessories – brackets, push-pull props and alignment rails, attach with the same MEVA flange screw into the multi-function profile
- **Tying for inclined or battered walls**
 - Conical shaped tie holes allow for skewed ties when forming battered walls
- **Compatible with all supplementary MEVA formwork systems**

Imperial

A wall of innovation

Features that save labor, time, and money

MEVA systems are best-in-class because of their high-quality design and construction, accessories, and panel details that allow for efficient concrete forming. With standardized system components, and accessories that have been tailored to meet the needs of our customers for ease and efficiency, Imperial combines all the features that make MEVA systems the best solution for a wide variety of job site applications.

Features of the Imperial vertical formwork panels include:

- Several multi-function profiles on tie position allows for pre-attaching accessories in a gang-form application
- All accessories are attached to the welded-in Dywidag threads on the multi-function profile
- Walkway brackets equipped with a pin that locks in the safe position



Flange screw

Single component for strong connection of all accessories – easily installed by hand

Multi-function profile

Made from closed hollow steel profiles with welded-in DW 15 nuts for rapid, consistent connection of accessories

Tie hole

With conical tie sleeve, welded in from both sides

Closed hollow profile

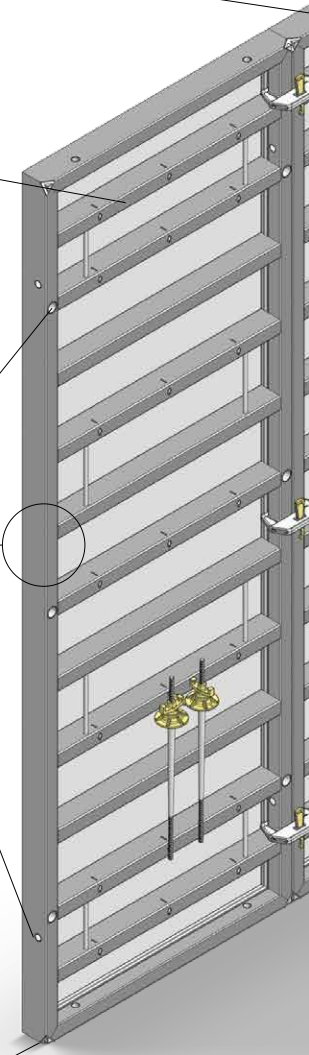
For high stability and a long service life

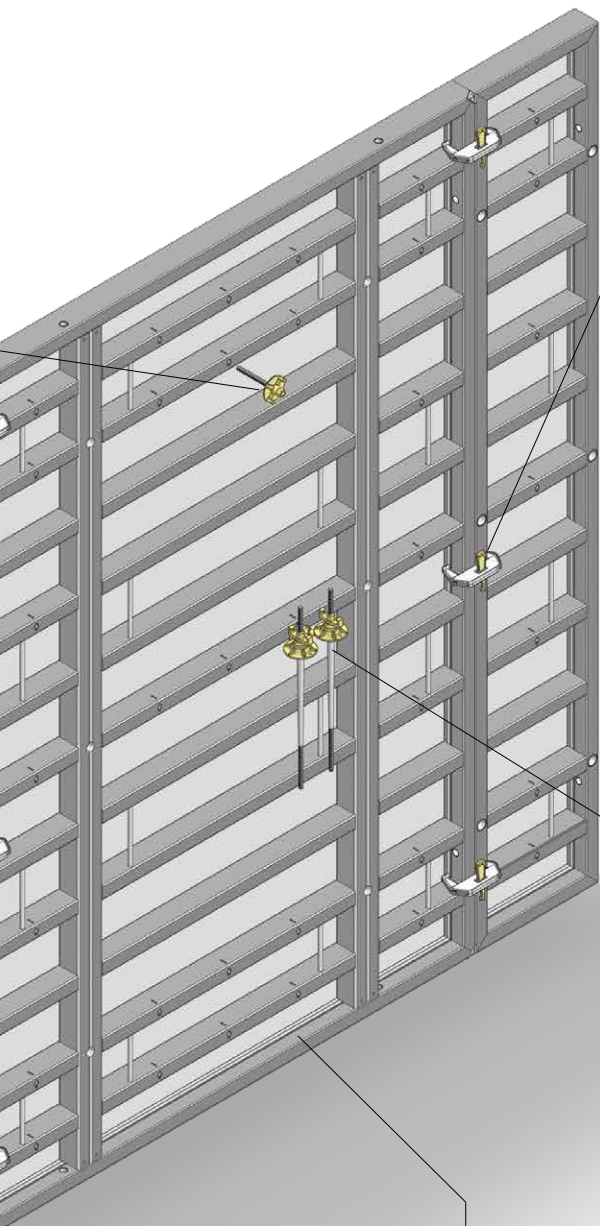
Transport hole

Designed for use with the lifting hook 60 for efficient loading/unloading of panels when stacked

Bump notch

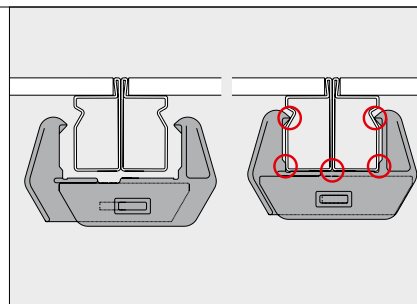
Fitted at four corners for 4' and 8' wide panels to make adjustment and alignment with a crow bar easier





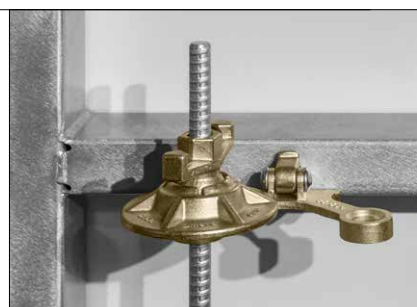
Hot-dip galvanized frame

Surface finish reduces concrete adhesion for easier stripping, cleaning, and rust prevention



M-assembly lock

The M-assembly lock can be placed at any position along the frame using only one hand. A few hammer blows will achieve a strong, level, five-point panel connection.



Tie rod fixture

Attaches to multi-function profile – for quick and efficient tie rod storage on the job site.



alkus all-plastic facing

No water absorption, resistant to swelling and shrinkage. Creates a high-quality concrete finish.

Panels, Corners, and Accessories

For every requirement

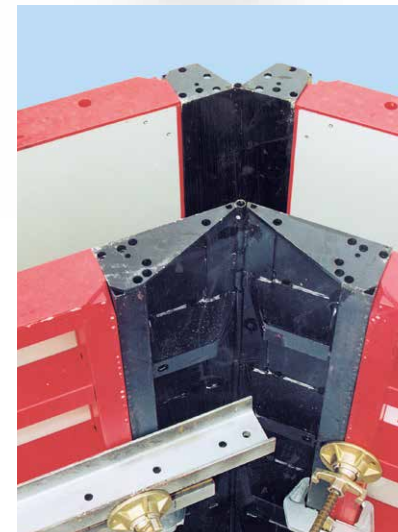
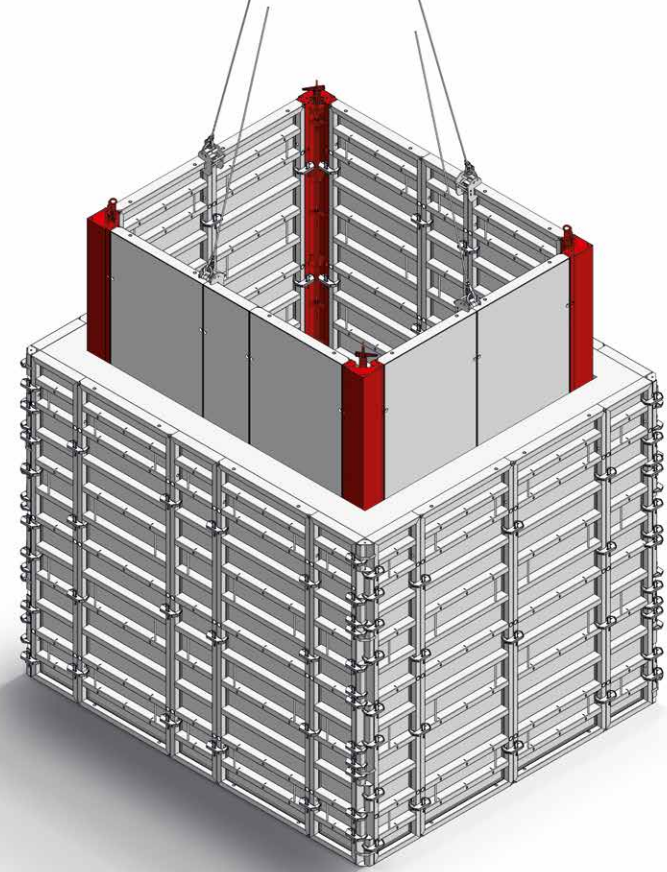
Economical use: All panels can be combined vertically and horizontally

Imperial panels are available in 4 heights and 8 widths. The panels are symmetrical and can be used – and ganged – vertically and horizontally, making it possible to pour any wall geometry. Areas needing fillers are kept to a minimum, saving labor and time. 4' wide multi-purpose panels with tie holes available every 2 inches, are available in all panel heights.

	Panel width [Feet and Inches]								MPP	PP	Corners					Fill- ers
	8'	4'	3'-6"	3'	2'-6"	2'	1'-6"	1'	4'	PP	IC	OC	AIC	AOC	SC	FS
Height [Ft]	12'	■	■	■	■	■	■	■	■	■	■	■	■	■	■	■
	8'	■	■	■	■	■	■	■	■	■	■	■	■	■	■	■
	4'	■	■	■	■	■	■	■	■	■	■	■	■	■	■	■
	2'	■	■	■	■	■	■	■	■	■	■	■				■

MPP Multi-purpose panel
PP Pilaster panel
IC Inside corner
OC Outside corner

AIC Articulated inside corner
AOC Articulated outside corner
SC Stripping corner
FS Filler strip



Imperial panels come with a full range of corner options to meet the needs of any project. 90° inside and outside corners are used for standard corner forming. Articulated corners (left) are adjustable between 60° and 180° with a locking device for repeated angles. Stripping corners for stair and elevator core forming (above) collapse into a smaller angle for stripping and movement without disassembly. There are also special corner options for forming columns (right).



Worker Safety

Built-in assurance

Worker safety is always the first priority for MEVA. All Imperial panels are equipped with tie-off bars that allow for safe working on the formwork. Walkway brackets are securely attached to the multi-purpose panel by simple attaching at the keyhole and turning 45°.

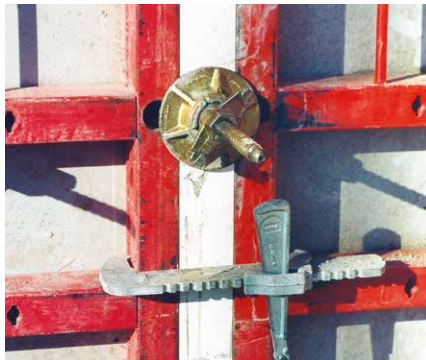


Heavy-duty Formwork for any Job

The versatile time-saver

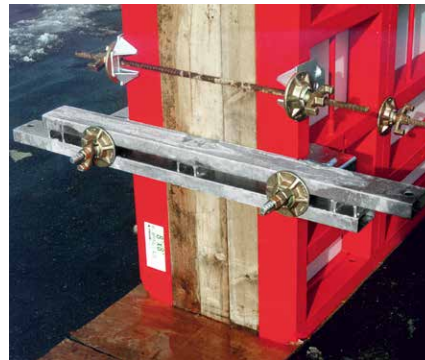
Flexible for many applications

Imperial is easy to set up and allows for pouring up to 40 ft. depending on environmental conditions. The large selection of panel sizes that can be combined vertically or horizontally, with assembly locks that can be attached anywhere on the frame, allow walls of any size or geometry to be formed with ease. No matter if it is vertically or horizontally offset, on sloping ground, single-sided and backed by STB support frames, or placed on KLK or MGC climbing platforms to pour cores; Imperial is up to every concrete construction challenge.



Fillers

Fillers that are 1", 2" or 3" wide can be formed using single Imperial aluminum fillers without additional steel rails. Fillers wider than 3" can be formed using lumber and steel rails. Uni-assembly locks are used to connect the adjacent panels with the filler in between - up to 6" wide.



Bulk heads

Bulk heads can be formed using either bulkhead brackets or steel rails/walers with column clamps and ties.



Bulk head brackets





True Architectural Quality

Ideal for fair-faced concrete

Top results

The symmetrical alignment of tie holes and joints ensures an even joint and tie hole pattern on the concrete surface. This is ideal for projects with high demands on the exposed concrete finish. The all-plastic facing alkus, standard in all Imperial panels, delivers a smooth, clean, consistent, and even concrete finish from the first pour to the last.



Pioneer and Trendsetter

More with MEVA

Formwork. Simple. Smart.

A lot of things that are now considered to be standard in the formwork industry were developed by MEVA in Haiterbach, Germany. As a trendsetter for the entire industry, we work day in and day out to make formwork safer, more efficient and easier for our customers to use. For us, the excellent quality of our products and advancing formwork technology is par for the course.

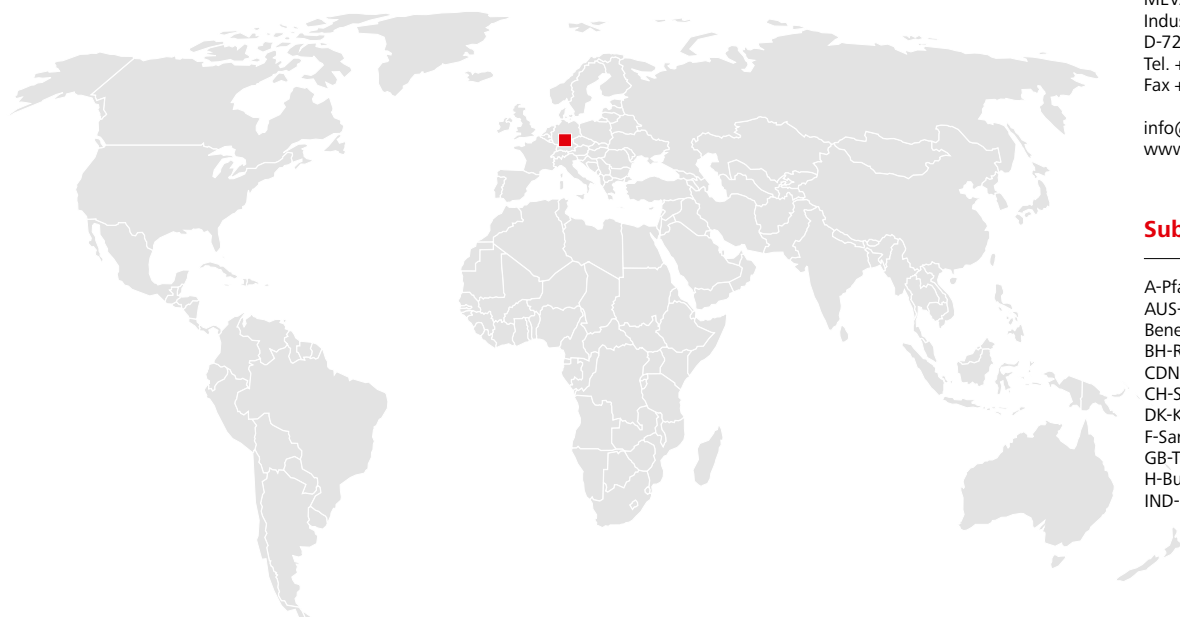
We are independent, family-run, and committed to the values of a medium-sized company in everything we do. That is why our customers may rightly expect not only the most advanced products but also a comprehensive, personal commitment to projects all around the world.

From the most intricate special formwork designs to simple, standard formwork applications: Our experience and wide range of products make us a strong and able partner, even for the most complex challenges in modern day concrete construction.



You can rely on us wherever you are.

With 40 offices on 5 continents, we are
on the spot wherever you need us.



MEVA Schalungs-Systeme GmbH

Industriestrasse 5 Tel. +49 7456 692-01
72221 Haiterbach Fax +49 7456 692-66
Germany info@meva.net

www.meva.net

MEVA North America

MEVA Formwork Systems, Inc.
2000 Airpark Dr.
Springfield, OH 45502
United States of America
Tel. +1 937 328 0022
Fax +1 937 328 0044

info@mevaformwork.com
www.mevaformwork.com

Southeast Distribution Center
11701 Mt. Holly Road
Charlotte, NC 28214

Headquarters (Germany)

MEVA Schalungs-Systeme GmbH
Industriestrasse 5
D-72221 Haiterbach
Tel. +49 7456 692-01
Fax +49 7456 692-66

info@meva.net
www.meva.net

Subsidiaries/international bases

A-Pfaffstätten	Tel. +43 2252 20900-0
AUS-Adelaide	Tel. +61 8 82634377
Benelux, Gouda	Tel. +31 182 570770
BH-Riffa	Tel. +973 3322 4290
CDN-Toronto	Tel. +1 416 8278714
CH-Seon	Tel. +41 62 7697100
DK-Køge	Tel. +45 56 311855
F-Sarreguemines	Tel. +33 387 959938
GB-Tamworth	Tel. +44 1827 60217
H-Budapest	Tel. +36 1 2722222
IND-Mumbai	Tel. +91 22 27563430

LATAM	latam@meva.net
MA-Casablanca	Tel. +212 684-602243
MAL-Perak	Tel. +60 12 5209337
N-Oslo	Tel. +47 67 154200
PA-Panama City	Tel. +507 2372222
PH-Manila	Tel. +63 998 5416975
QA-Doha	Tel. +974 4006 8485
SGP-Singapore	Tel. +65 67354459
UAE-Dubai	Tel. +971 4 3411180
USA-Springfield	Tel. +1 937 3280022

ADVANCE
SHORING COMPANY

1400 JACKSON STREET
ST PAUL, MN 55117
(651) 489-8881
advancecos.com